

BANDA MUNICIPAL

- DE -

MADRID



Arpa.

Sinfonía Fantástica.

de

Berlioz.



♩ = 58

♩ = 2. Tacet.

♩ = 2.

a 1

All: non troppo

Handwritten musical notation for two staves. The top staff is in treble clef with a key signature of three flats (B-flat, E-flat, A-flat) and a 3/8 time signature. The bottom staff is in bass clef with the same key signature and time signature. A large stylized 'Z' or '4' is written to the right of the staves.

Handwritten musical score for three staves, featuring complex rhythmic patterns and dynamic markings. The first staff is marked 'Sordina' and 'mf'. The second staff is marked 'Sordina' and 'mf'. The third staff is marked 'Sordina' and 'mf'. The score includes various musical notations such as notes, rests, and dynamic markings.



Handwritten musical notation on two staves. The first staff contains a treble clef, a key signature of one sharp (F#), and a 2/4 time signature. The second staff contains a bass clef. The notation includes various notes, rests, and a large '2' written above the second staff. There are also some handwritten annotations like '10' and '2'.

Handwritten musical notation on two staves. The first staff contains a treble clef, a key signature of one sharp (F#), and a 2/4 time signature. The second staff contains a bass clef. The notation includes various notes, rests, and a large '2' written above the second staff. There are also some handwritten annotations like '10' and '2'.

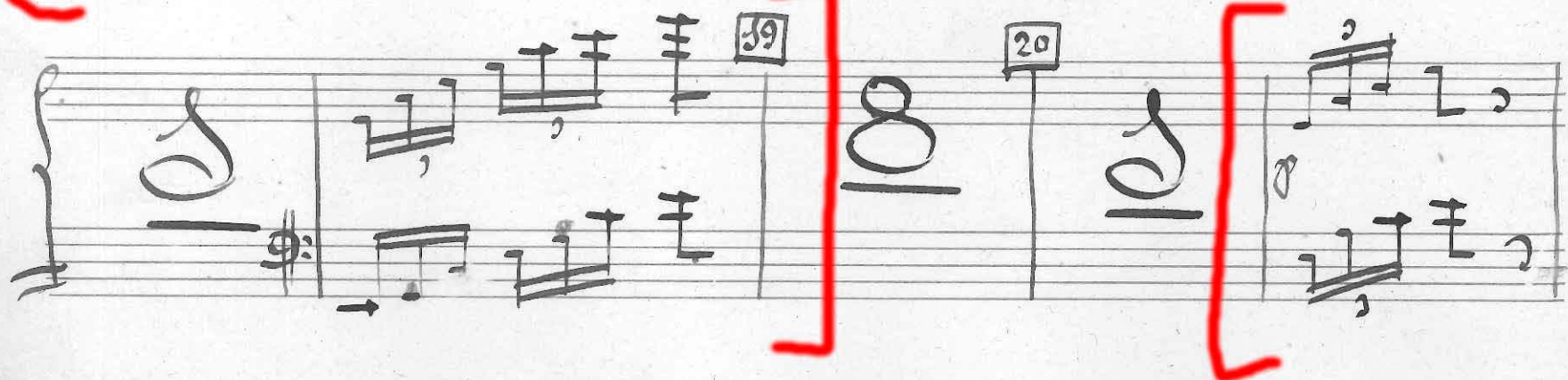
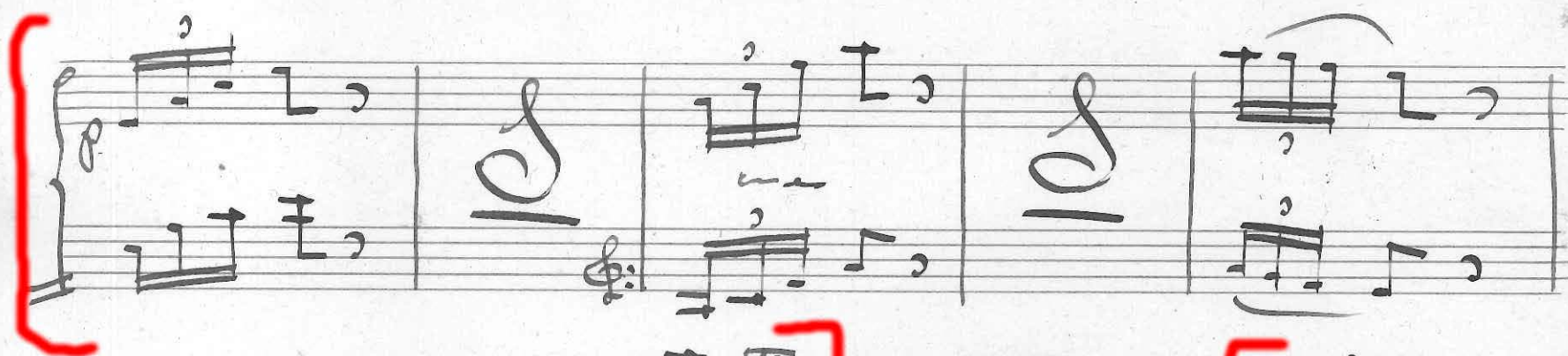
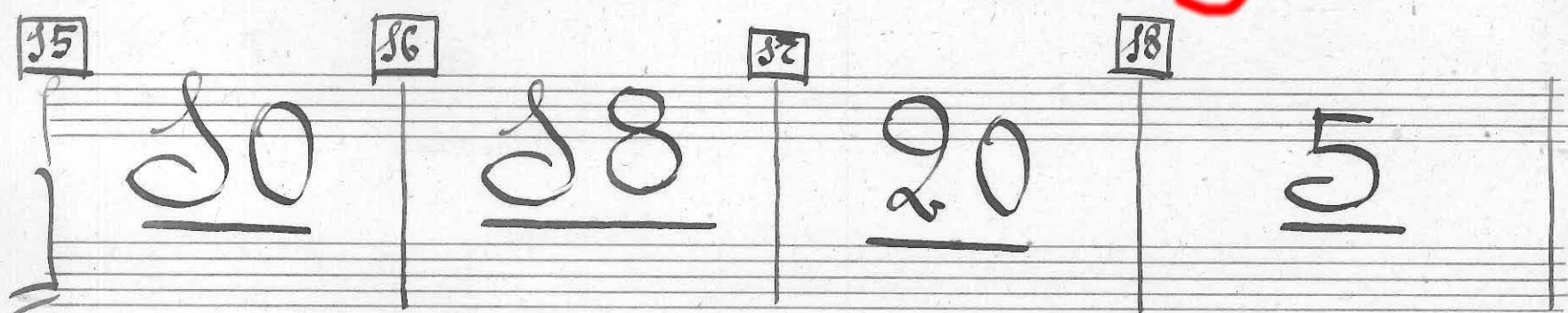
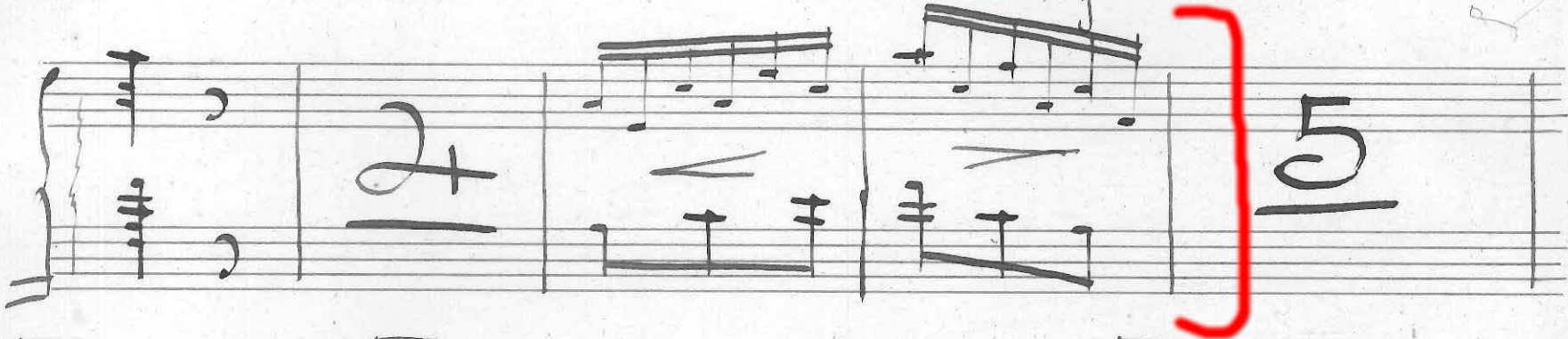
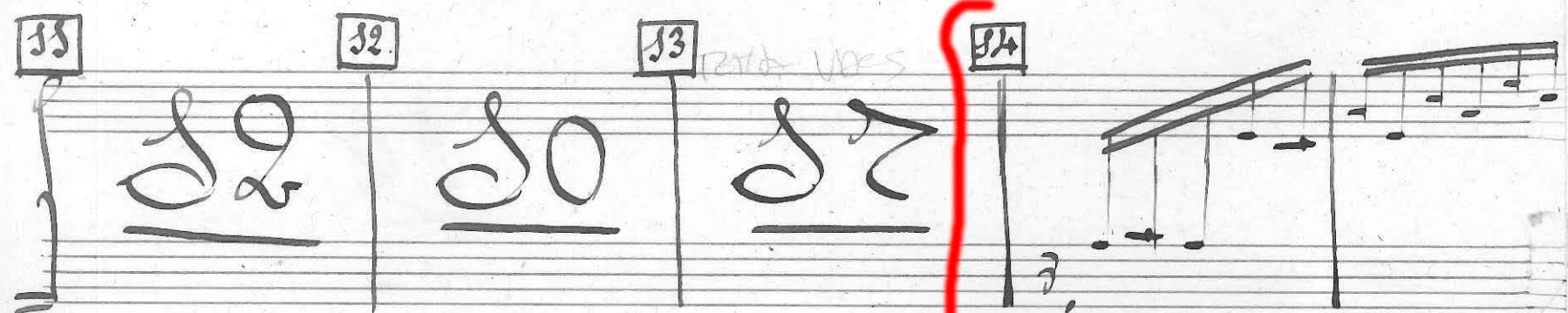
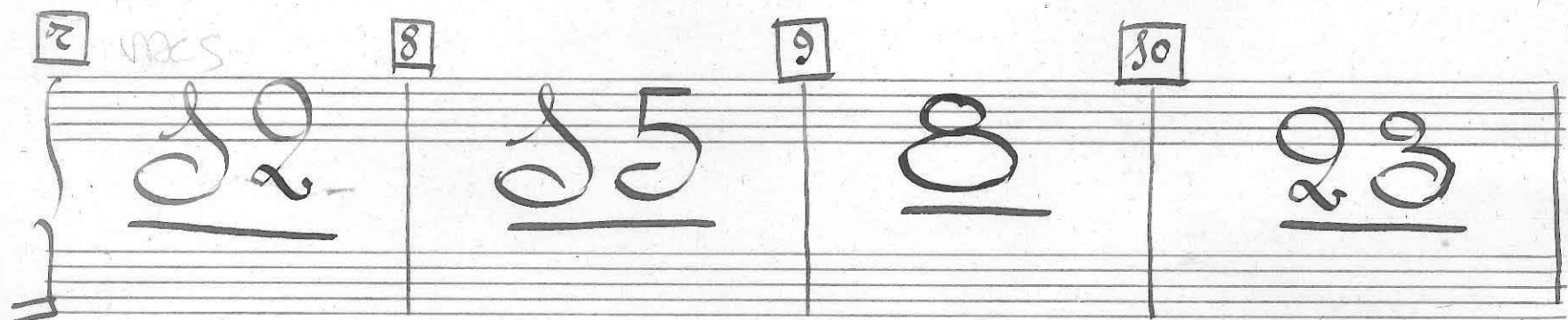
Handwritten musical notation on two staves. The first staff contains a treble clef, a key signature of one sharp (F#), and a 2/4 time signature. The second staff contains a bass clef. The notation includes various notes, rests, and a large '2' written above the second staff. There are also some handwritten annotations like '10' and '2'.

Handwritten musical notation on two staves. The first staff contains a treble clef, a key signature of one sharp (F#), and a 2/4 time signature. The second staff contains a bass clef. The notation includes various notes, rests, and a large '2' written above the second staff. There are also some handwritten annotations like '10' and '2'.

Handwritten musical notation on two staves. The first staff contains a treble clef, a key signature of one sharp (F#), and a 2/4 time signature. The second staff contains a bass clef. The notation includes various notes, rests, and a large '2' written above the second staff. There are also some handwritten annotations like '10' and '2'.

Handwritten musical notation on two staves. The first staff contains a treble clef, a key signature of one sharp (F#), and a 2/4 time signature. The second staff contains a bass clef. The notation includes various notes, rests, and a large '2' written above the second staff. There are also some handwritten annotations like '10' and '2'.







Handwritten musical notation on a grand staff. The left hand plays a series of chords, including a 10th chord. The right hand plays a melodic line with eighth and sixteenth notes.

Handwritten musical notation on a grand staff. The left hand plays a series of chords, including a 10th, 10, 12, ~~12~~, and 10. The right hand plays a melodic line with eighth notes. A red bracket highlights the first two measures. Measure numbers 22 and 23 are written above the staff.

Handwritten musical notation on a grand staff. The left hand plays a series of chords, including a 10th, 10, 12, ~~12~~, and 10. The right hand plays a melodic line with eighth notes. A red bracket highlights the first two measures. Measure numbers 22 and 23 are written above the staff.

Handwritten musical notation on a grand staff. The left hand plays a series of chords, including a 10th, 10, 12, ~~12~~, and 10. The right hand plays a melodic line with eighth notes. A red bracket highlights the first two measures. Measure numbers 22 and 23 are written above the staff.

Handwritten musical notation on a grand staff. The left hand plays a series of chords, including a 10th, 10, 12, ~~12~~, and 10. The right hand plays a melodic line with eighth notes. A red bracket highlights the first two measures. Measure numbers 22 and 23 are written above the staff.

Handwritten musical notation on a grand staff. The left hand plays a series of chords, including a 10th, 10, 12, ~~12~~, and 10. The right hand plays a melodic line with eighth notes. A red bracket highlights the first two measures. Measure numbers 22 and 23 are written above the staff.

Handwritten signature or initials in the bottom right corner.